

CCHD and BVHP Represented at NCC Annual Meeting

Volume 6, Issue 6, December 2010

CONTENTS

HRC Database

Development 2

Ten-Year Celebration . . . 2

New Affiliated Faculty . . . 2

Faculty and Staff

Dissiminate Research

Findings 3

Graduate Student

Spotlight 3

The Annual Planning Meeting of the National Community Committee (NCC), which was held in Seattle from October 11-14, provided the Brazos Valley Health Partnership with an opportunity to share its experience as the community committee of the Center for Community Health Development (CCHD) and to gain from the experience of other community committees in their work with their respective Prevention Research Centers (PRCs).

The CCHD is a PRC that receives funding from the Center for Disease Control and Prevention (CDC) in Atlanta. The CDC provides funding for 37 PRCs across the nation to conduct disease prevention research in collaboration with their local communities. The NCC is composed of representatives of the local community committees of those 37 PRCs. At the NCC planning meeting in October, CCHD was one of 23 PRCs to be presented with the "Community Partnership Engagement Award," which recognizes the efforts of the PRC to incorporate the

principles of community-based participatory research (CBPR) in its work with local communities. The NCC has invited all recipients of the award to apply for the "CBPR Best Practice Award," which will be presented at the PRC business meeting in Atlanta in April 2011.

Having recently met with CDC representatives who were conducting a CCHD site visit in September 2010—and having had the opportunity to observe and learn from its NCC partners through meetings and monthly conference calls—the BVHP views its partnership with CCHD as one which might be of benefit to its NCC colleagues as an example of

how CBPR can be successfully incorporated in the work of PRCs with their respective communities. The BVHP is not only in the process of applying for the CBPR Best Practice Award, but has submitted for consideration an abstract which—if accepted—will be presented at the annual PRC business meeting in April 2011.

While the BVHP and CCHD look forward to sharing their experiences with their NCC partners, they also hope to gain from the experiences of the partners. At the conference in September, the BVHP had the opportunity to visit a community resource center administered by the non-profit organization that is

the community committee representative of the University of Washington PRC. With generous funding of several local sponsors, including Nike and the Bill and Melinda Gates Foundation, the non-profit

organization was able to open a beautiful, spacious, well-appointed resource center serving the Asian American community in Seattle through a range of services, including counseling, ESL courses, and coordination with refugee resettlement agencies. The tour of



this facility provided inspiration to those who were looking for ways to enhance public awareness of their respective partnerships in their local communities. In October 2011, the PRC of the University of Rochester Medical Center and its community partner, the National Center for Deaf Health Research, will host the NCC's annual planning meeting. The hosts aim to provide "an unforgettable experience for the visiting NCC delegates," according to their October 2010 newsletter. We look forward to the opportunity to gain from our colleagues in Rochester!"

CCHD Begins Development on Client Management Database for Health Resource Centers

CCHD staff has been working with the Madison Health Resource Center staff and the Grimes Health Resource Center office manager to create a new client database. This new, user-friendly database will eventually be expanded to serve as a complete client record for office managers to track clients and all of the services that they are accessing within the resource centers. As a result, county health resource commissions can use deidentified client services data to evaluate the impact of the health resource centers.

As of November, the database is being piloted in the Madison and Grimes health resource centers. CCHD graduate research assistants Keli Dean, Whitney Garney, Bridget Russell, and Lyndsey Simpson have been providing onsite database training to the office managers. The implementation and training has been well received. Resource center staff will continue to work with CCHD to suggest modifications to the initial database and will be instrumental in guiding the development of the expanded database.

CCHD Celebrating 10 Years

Ten years ago, the director and one graduate student started what was initially known as the Community Health Development Program at the Texas A&M Health Science Center. In 2004, the Centers for Disease Control and Prevention (CDC) funded the program as a Prevention Research Center, and with this new designation came a new name – the Center for Community Health Development (CCHD).

In 2011, CCHD will celebrate 10 years of research and education to improve population health status, particularly among rural residents. As part of the celebration, CCHD will be distributing monthly one-pagers highlighting some of our accomplishments over the past 10 years, as well as hosting a celebration event in September. The first one-pager will be distributed in January, and more information about the celebration event will be forthcoming.

Have you Moved? We are continuously making efforts to keep our distribution list up to date. If you have a new email address or mailing address, please send it to Kelly Drake at kamorris@srph.tamhsc.edu so that we may update your contact information in our mail out list.

New Affiliated Faculty



Dr. Christine Tisone is an anthropologist and international health specialist who lived and worked in the Dominican Republic for 12 years before joining the Health & Kinesiology Department at Texas A&M in 2008. She received her Ph.D. in Anthropology, Masters in Public Health, and BS in Biology from Indiana University. Her research interests include child growth, cultural effects on child health status, nutrition status assessment in field settings, traditional versus biomedical health care in Latin America, health and nutrition promotion, and obesity prevention. In the Dominican Republic, Christine was a faculty member at Pontificia Universidad Católica Madre y Maestra and served as a Technical Trainer in the U.S. Peace Corps Health and Special Education sectors. She continues to conduct research in the Dominican Republic and to direct a summer research-oriented study abroad program. In addition to her current TAMU role as Research Scientist, she teaches International Health and is the Co-Director of the Child and Adolescent Health Research Lab. She is shown in this photo with her Dominican God-daughter, Chanelle.



Verna M. Keith is Professor of Sociology and Director of the Race and Ethnic Studies Institute at Texas A&M University. Dr. Keith is a medical sociologist who obtained her Ph.D. at the University of Kentucky. She also completed post-doctoral training in public health, survey methodology, and data analysis at the University of Michigan. A major part of her research has focused on race/ethnicity, social class, and gender disparities in mental and physical health with special emphasis on social stressors. She has authored and co-authored articles and book chapters on gender differences in the effects of chronic stressors on depressive symptoms; racism and psychological distress; vulnerability and resilience among Hurricane Katrina survivors; and the effects of skin tone on status attainment and self concept among African Americans. Her most recent research interests center on linking race, socioeconomic position, stressors, biomarkers, and cell aging.



Dr. Linda G. Castillo is an Associate Professor in the Counseling Psychology program at Texas A&M University. Dr. Castillo's expertise and research focuses on the influence of acculturation, enculturation, and marianismo on educational persistence and mental health of Mexican American adolescents and women. Dr. Castillo is the Principal Investigator and Project Director of the Bryan ISD GEAR UP, a 6-year program funded by the U.S. Department of Education. To facilitate college and career readiness of 1,000 low-income adolescents, Dr. Castillo leads a team of academic faculty, school counselors and principals, counseling psychology and school counseling students, university financial aid officers, and members of various Bryan community and business organizations. She is a Fellow of the American Psychological Association.

Graduate Student Spotlight



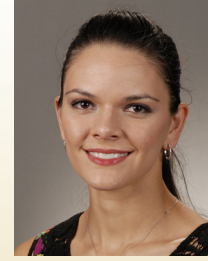
Lyndsey Simpson is a Texas A&M class of 2009 graduate from Lancaster, Texas. At a young age, she knew she wanted to attend a big school, and she knew that school was Texas A&M. She attended Lancaster High School and was

a member of the varsity track team in which she pole vaulted for four years. At Texas A&M, she majored in Health with a concentration in Allied Health and minored in Africana Studies. She is the daughter of Patricia and Dexter Simpson who are both alumni of Sam Houston State University and sister to younger brother John Simpson, who attends West Texas A&M, and older sister Kimberly Simpson, who is an alumnus of Sam Houston State University. Lyndsey is currently a member of Medical Group Management Association (MGMA) and enjoys networking. She also enjoys working out and running, as well as sewing, designing clothes and watching football.



Bridget Russell is currently a first year master's student in the Social and Behavioral Health Department at the Texas A&M School of Rural Public Health. She completed a bachelor's degree in Kinesiology at California State University

Northridge in 2010 and considers the west coast her home. During her undergraduate education, she was involved in multiple programs promoting physical activity and healthy nutrition in the surrounding communities in the greater Los Angeles area. These experiences, coupled with her passion for health and fitness, led her to pursue higher education geared towards health promotion and chronic disease prevention. Desiring a new adventure and a great education led her to Texas A&M University. She is especially excited to work for the CCHD as she is looking forward to the valuable experiences it will provide.



Stephanie McDougall was born in Phoenix, Arizona, but did most of her growing up in Washington, DC. Her father is a Navy Captain, and her mother is a teacher. After working over two summers in Arizona at an Equine

Surgical Center, she decided to attend Arizona State University's Agribusiness Program. In 2008, she graduated from ASU with a Bachelor of Science in Agribusiness and knew she wanted to pursue a Masters in Public Health instead of attending Veterinary School. She completed her Graduate Certificate in Public Health at the University of Arizona's Zuckerman School of Public Health. Ready for a change, she moved to Texas A&M this past August in pursuit of an MPH in Epidemiology. Her passions within Public Health include food/waterborne disease, infectious diseases, international health issues, and sustainability. While not in class or doing homework, Stephanie plays with her dog Pebbles, enjoys riding horses and quads, hiking, shooting, watching movies, cooking and listening to music.

PRC Directors' Meeting

On November 6, the Prevention Research Centers Program held its semi-annual directors' meeting at the Mount Vernon Country Club in Golden, Colorado. During the meeting, Ms. Marguerite Salazar, a regional director for the Department of Health and Human Services, gave a brief presentation and then solicited feedback from the PRC directors regarding priority areas for the Prevention Council. During the discussion group session that followed, 12 PRCs gathered to discuss collaborating as a Rural Health thematic network. CCHD, the Kentucky PRC, and the West Virginia PRC are developing a white paper to initiate a more formal conversation about creating this network.

CCHD Faculty and Staff Disseminate Research Findings

November 2010 was a month full of professional conferences and workshops, and CCHD faculty and staff took this opportunity to disseminate our research findings to a variety of audiences at these venues.

The 138th meeting of the American Public Health Association was held in Denver, Colorado, on November 6-10, 2010. The theme for this year's meeting was Social Justice: A Public Health Imperative. Several faculty and staff members associated with CCHD attended this year's conference and provided five presentations and four poster sessions on a variety of topics including childhood obesity and modifying classroom environments, chronic disease self-management, aging, and tobacco use and cessation.

The month of November also included the American Evaluation Association's annual meeting in San Antonio, Texas. Ms. Heather Clark, the Evaluation Manager at CCHD, and Ms. Brandy Kelly, a doctoral assistant, attended the conference and presented a poster session entitled "Using network analysis in the evaluation of community partnership building: An overview." Other authors on this presentation included Dr. Monica Wendel and Dr. Corliss Outley.

On November 12, 2010, the Health Science Center and the School of Rural Public Health hosted a research symposium in College Station. At this symposium, Heather Clark, Monica Wendel, Brandy Kelly, and Corliss Outley had a poster session entitled "Commitment to addressing access to health care by local leadership: A community capacity construct" based on the results of the 2010 Key Leader survey conducted in the Brazos Valley.

Our faculty and staff disseminated research and evaluation findings at several conferences this month and have more opportunities planned for the coming year. A list of our scholarly publications and presentations can be found on our website at <http://www.cchd.us/>.

1266 TAMU
College Station, TX 77843-1266

Phone: (979) 458-0937 * Fax: (979) 862-8371

E-mail: cchd@srph.tamhsc.edu

Website: <http://cchd.us>

Editor: Kelly N. Drake

Non-Profit Org
US Postage Paid
Permit #215
College Station, TX
77842

CCHD Executive Committee

Principal Investigator
Kenneth R. McLeroy, Ph.D.

Co-Principal Investigator
James N. Burdine, Dr.P.H.

Director
**Monica L. Wendel, Dr.P.H.,
M.A., M.P.H.**

*Program Development
Specialist*
Kelly Drake, M.P.H.

*Brazos Valley Regional
Director*
Angie Alaniz, B.A.

South Texas Regional Director
Julie St. John, M.P.H. , M.A.

*Director of Communication
& Training*
Christopher Beaudoin, Ph.D.

Co-Directors of Evaluation
Corliss Outley, Ph.D., M.S.
Lisako McKyer, Ph.D., M.P.H.

Evaluation Manager
Heather R. Clark, M.S.P.H.

*Director, TxHAN, TxNOPRN
and Principal Investigator,
Core Project-Rural Food
Environment*
**Joseph R. Sharkey, Ph.D.,
M.P.H., R.D.**

*Senior Research Associate,
Rural Food Choice Program*
Wesley Dean, Ph.D., M.A.

Director, CTxCARES
Marcia G. Ory, Ph.D., M.P.H.

Program Manager, CTxCARES
Meghan Wernicke, M.P.H.

*Director, Southwest Rural
Health Research Center*
Jane Bolin, Ph.D., J.D., RN



Congratulations to Tya Arthur and Lindsay Shea!



On October 18th, Tya Arthur, a doctoral research assistant with CCHD from 2007-2010, successfully defended her dissertation—An examination of healthy eating behaviors and household environmental factors among African American primary caregivers and children. Dr. Arthur left CCHD in October to begin a post-doctoral research associate position with the University of Florida.



In December, Ms. Lindsay Shea will graduate with her Master of Public Health in Social and Behavioral Health. After graduation, Lindsay will be relocating to Round Rock, Texas, and looking for employment in the public health field. She will also be preparing for her upcoming wedding. Congratulations and best wishes to Lindsay!

Dr. Ken McLeroy honored with Regents Professor Award



In their December 2nd meeting, the Texas A&M Board of Regents selected Dr. Ken McLeroy to receive the prestigious Regents Professor Award. In this process, Dr. McLeroy was selected from a group of 11 professors across the Texas A&M System. Dr. McLeroy is the Principal Investigator of CCHD and the Program for Rural and Minority Health Disparities Research. This award recognizes his important contributions to the School, the University, and the field.